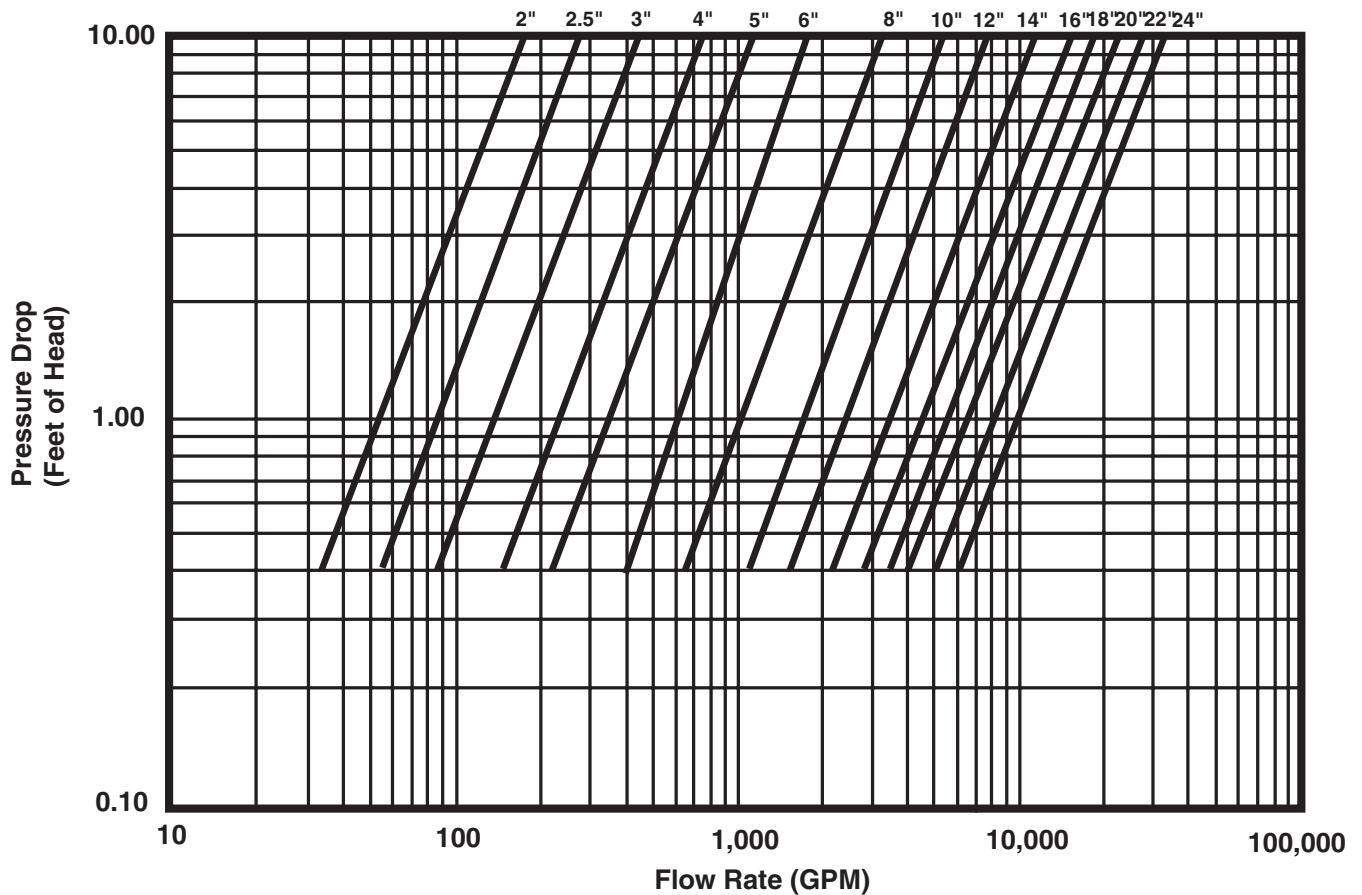


# Air Elimination Equipment

## Air Separator ASME Flow/Pressure Drop Charts

### 1" – 24" Air Separators With Strainer Flow Chart

Indicates pressure drop in feet of water versus flow in gallons per minute with strainer. This is an improved method for properly computing pressure drop in AMTROL Air Separators.



Job Name \_\_\_\_\_  
 Location \_\_\_\_\_  
 \_\_\_\_\_  
 \_\_\_\_\_  
 Engineer \_\_\_\_\_

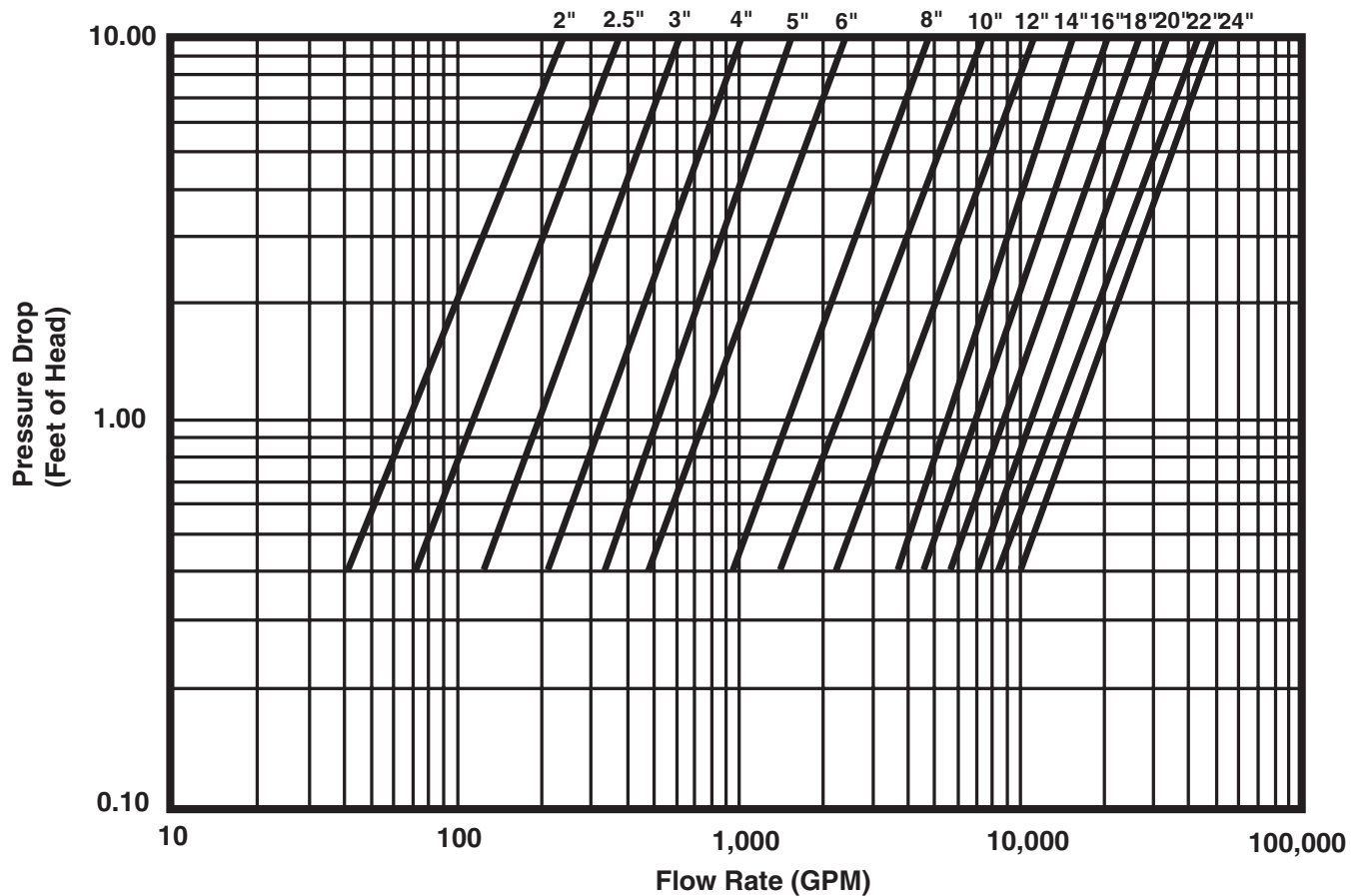
Contractor \_\_\_\_\_  
 Contractor P.O. No. \_\_\_\_\_  
 Sales Representative \_\_\_\_\_  
 Model No. Ordered \_\_\_\_\_  
 ASME CERTIFICATION REQUIRED  Yes  No

# Air Elimination Equipment

## Air Separator ASME Flow/Pressure Drop Charts

### 1" – 24" Air Separators Without Strainer Flow Chart

Indicates pressure drop in feet of water versus flow in gallons per minute with strainer. This is an improved method for properly computing pressure drop in AMTROL Air Separators.

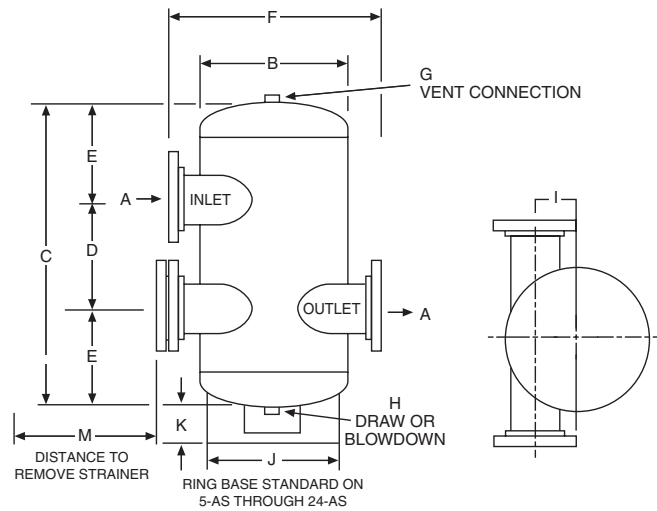


Job Name \_\_\_\_\_  
 Location \_\_\_\_\_  
 \_\_\_\_\_  
 \_\_\_\_\_  
 Engineer \_\_\_\_\_

Contractor \_\_\_\_\_  
 Contractor P.O. No. \_\_\_\_\_  
 Sales Representative \_\_\_\_\_  
 Model No. Ordered \_\_\_\_\_  
 ASME CERTIFICATION REQUIRED \_\_\_\_\_ Yes \_\_\_\_\_ No

# Air Elimination Equipment

## 2" - 24" Air Separators ASME with Strainer 125 PSIG Working Pressure



### Specifications/Dimensions All dimensions and weights are approximate.

Model No.	Dimensions in Inches												Strainer Screen Free Area Sq.ins.	Ship Wt. lbs.
	A	B	C	D	E	F	G	H	I	J	K	M		
2-AS	2	10	23	8	7½	16¼	¾	¾	3	-	-	14	33	70
2½-AS	2½	10	23	8	7½	16¼	¾	¾	3	-	-	14	40	70
3-AS	3	10	23	8	7½	17	¾	¾	3	-	-	14	45	75
4-AS	4	12	24¾	10	7¼	20¾	¾	¾	3½	-	-	16½	78	80
5-AS	5	16	34½	12	11¼	24	¾	¾	4¼	12¾	4⅝	21½	120	180
6-AS	6	18	41	14	13½	26	¾	¾	4¼	14	4⅝	23	186	249
8-AS	8	24	52	18	17	32	¾	¾	5¾	16	4⅝	29	313	351
10-AS	10	30	59½	22	18¾	40	¾	¾	7¾	24	4⅝	35	491	752
12-AS	12	36	70	26	22	46	¾	¾	7¾	30	12⅝	40	644	908
14-AS	14	42	74	30	22	52	¾	¾	13	30	13⅜	48	810	2200
16-AS	16	48	90	32	29	64	3	3	15	42	12½	56	969	2891
18-AS	18	54	102	36	33¼	64	3	3	16	42	12⅜	62	1517	4900
20-AS	20	60	102	30	36	70	3	3	19	45	6⅝	68	1860	5600
22-AS	22	60	119	48	35⅜	70	3	3	18	45	7	68	2073	6300
24-AS	24	72	132	43	44⅝	82	3	3	22	45	8	80	2712	8000

### Maximum Operating Conditions

Working temperature	350° F (176.7° C)
Working pressure	125 PSIG (8.8 bar)

Designed and Constructed per ASME Section VIII, Division 1.  
Also available with 150 PSIG (10.5 bar).

### Materials of Construction

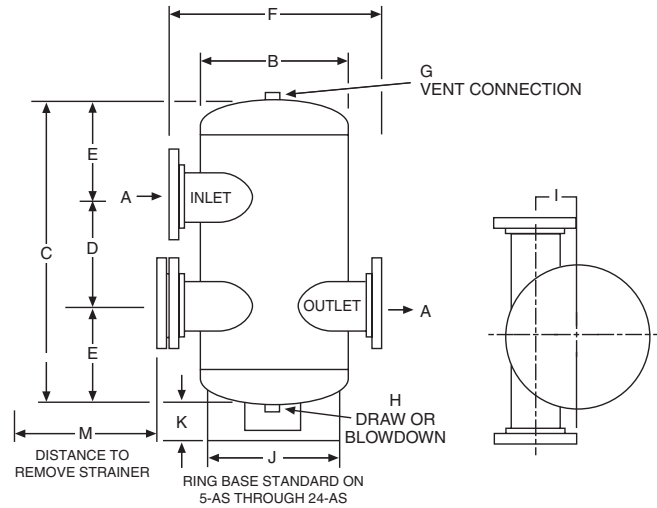
Body	Steel
Flanges	Steel - ANSI 150#
Strainer	304 Stainless Steel

Job Name \_\_\_\_\_  
 Location \_\_\_\_\_  
 \_\_\_\_\_  
 \_\_\_\_\_  
 Engineer \_\_\_\_\_

Contractor \_\_\_\_\_  
 Contractor P.O. No. \_\_\_\_\_  
 Sales Representative \_\_\_\_\_  
 Model No. Ordered \_\_\_\_\_  
 ASME CERTIFICATION REQUIRED \_\_\_\_\_ Yes \_\_\_\_\_ No

# Air Elimination Equipment

## 2" - 24" Air Separators ASME with Strainer 150 PSIG Working Pressure



### Specifications/Dimensions

All dimensions and weights are approximate.

Model No.	Dimensions in Inches												Strainer Screen Free Area Sq.ins.	Ship Wt. lbs.
	A	B	C	D	E	F	G	H	I	J	K	M		
2-AS	2	10	23	8	7½	16¼	¾	¾	3	-	-	14	33	70
2½-AS	2½	10	23	8	7½	16¼	¾	¾	3	-	-	14	40	70
3-AS	3	10	23	8	7½	17	¾	¾	3	-	-	14	45	75
4-AS	4	12	24¾	10	7¼	20¾	¾	¾	3½	-	-	16½	78	80
5-AS	5	16	34½	12	11¼	24	¾	¾	4¼	12¾	4⅝	21½	120	200
6-AS	6	18	41	14	13½	26	¾	¾	4¼	14	4⅝	23	186	250
8-AS	8	24	52	18	17	32	¾	¾	5¾	16	4⅝	29	313	455
10-AS	10	30	59½	22	18¾	40	¾	¾	7¾	24	4⅝	35	491	770
12-AS	12	36	70	26	22	46	¾	¾	7¾	30	12⅝	40	644	1150
14-AS	14	42	74	30	22	52	¾	¾	13	30	13⅜	48	810	2200
16-AS	16	48	90	32	29	64	3	3	15	42	12½	56	969	4300
18-AS	18	54	102	36	33¼	64	3	3	16	42	12⅜	62	1517	4900
20-AS	20	60	102	30	36	70	3	3	19	45	6⅟₁₆	68	1860	5600
22-AS	22	60	119	48	35⅜	70	3	3	18	45	7	68	2073	6300
24-AS	24	72	132	43	44⅝	82	3	3	22	45	8	80	2712	8000

### Maximum Operating Conditions

Working temperature	350° F (176.7° C)
Working pressure	150 PSIG (10.5 bar)

Also available with 125 PSIG (8.8 bar).  
 Constructed per ASME Code Section VIII, Division 1.

### Materials of Construction

Body	Steel
Flanges	Steel - ANSI 150#
Strainer	304 Stainless Steel

Job Name \_\_\_\_\_

Location \_\_\_\_\_

\_\_\_\_\_

\_\_\_\_\_

Engineer \_\_\_\_\_

Contractor \_\_\_\_\_

Contractor P.O. No. \_\_\_\_\_

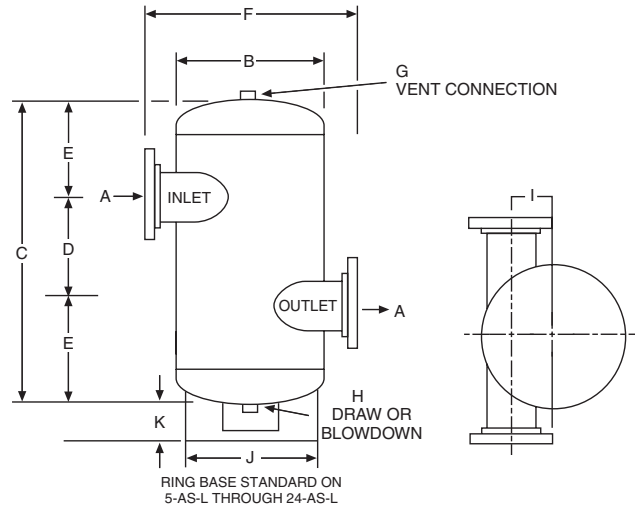
Sales Representative \_\_\_\_\_

Model No. Ordered \_\_\_\_\_

ASME CERTIFICATION REQUIRED \_\_\_\_\_ Yes \_\_\_\_\_ No

# Air Elimination Equipment

1" - 24" Air Separators ASME without Strainer 125 PSIG Working Pressure



## Specifications/Dimensions

All dimensions and weights are approximate.

Model No.	Dimensions in Inches											Ship Wt. lbs.
	A	B	C	D	E	F	G	H	I	J	K	
1-AS-L	1	4½	12	4	4	7	¾	¾	1⅝	-	-	15
2-AS-L	2	10	23	8	7½	16¼	¾	¾	3	-	-	65
2½-AS-L	2½	10	23	8	7½	16¼	¾	¾	3	-	-	65
3-AS-L	3	10	23	8	7½	17	¾	¾	3	-	-	70
4-AS-L	4	12	24¾	10	7¼	20¾	¾	¾	3½	-	-	75
5-AS-L	5	16	34½	12	11¼	24	¾	¾	4¼	12¾	4⅝	145
6-AS-L	6	18	41	14	13½	26	¾	¾	4¼	14	4⅝	177
8-AS-L	8	24	52	18	17	32	¾	¾	5¾	16	4⅝	266
10-AS-L	10	30	59½	22	18¾	40	¾	¾	7¾	24	4⅝	564
12-AS-L	12	36	70	26	22	46	¾	¾	7¾	30	12⅝	713
14-AS-L	14	42	74	30	22	52	¾	¾	13	30	13⅝	1176
16-AS-L	16	48	90	32	29	64	3	3	15	42	12½	1791
18-AS-L	18	54	102	36	33¼	64	3	3	16	42	12⅝	4300
20-AS-L	20	60	102	30	36	70	3	3	19	45	6⅝	4800
22-AS-L	22	60	119	48	35⅝	70	3	3	18	45	7	5300
24-AS-L	24	72	132	43	44⅝	82	3	3	22	45	8	6900

## Maximum Operating Conditions

Working temperature	350° F (176.7° C)
Working pressure	125 PSIG (8.8 bar)

Higher pressures available upon request.

## Materials of Construction

Body	Steel
Flanges	Steel - ANSI 150#

Designed and Constructed per ASME Section VIII, Division 1.

Job Name \_\_\_\_\_

Location \_\_\_\_\_

Engineer \_\_\_\_\_

Contractor \_\_\_\_\_

Contractor P.O. No. \_\_\_\_\_

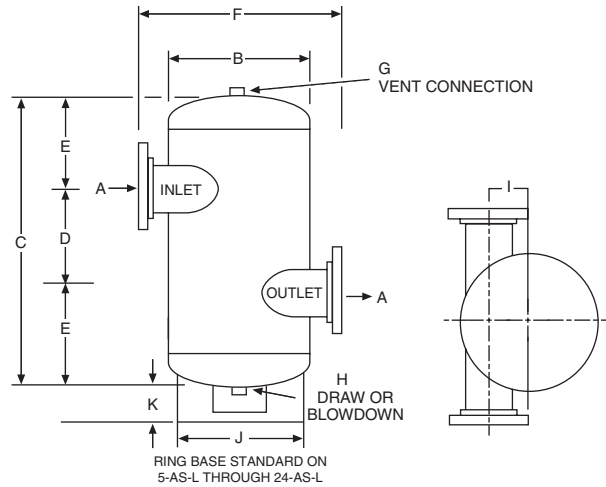
Sales Representative \_\_\_\_\_

Model No. Ordered \_\_\_\_\_

ASME CERTIFICATION REQUIRED \_\_\_\_\_ Yes \_\_\_\_\_ No

# Air Elimination Equipment

1" - 24" Air Separators ASME without Strainer 150 PSIG Working Pressure



## Specifications/Dimensions All dimensions and weights are approximate.

Model No.	Dimensions in Inches											Ship Wt. lbs.
	A	B	C	D	E	F	G	H	I	J	K	
1-AS-L	1	4½	12	4	4	7	¾	¾	1 <sup>5</sup> / <sub>16</sub>	-	-	15
2-AS-L	2	10	23	8	7½	16¼	¾	¾	3	-	-	65
2½-AS-L	2½	10	23	8	7½	16¼	¾	¾	3	-	-	65
3-AS-L	3	10	23	8	7½	17	¾	¾	3	-	-	70
4-AS-L	4	12	24 <sup>3</sup> / <sub>8</sub>	10	7¼	20¾	¾	¾	3½	-	-	75
5-AS-L	5	16	34½	12	11¼	24	¾	¾	4¼	12 <sup>3</sup> / <sub>4</sub>	4 <sup>5</sup> / <sub>8</sub>	145
6-AS-L	6	18	41	14	13½	26	¾	¾	4¼	14	4 <sup>5</sup> / <sub>8</sub>	200
8-AS-L	8	24	52	18	17	32	¾	¾	5¾	16	4 <sup>5</sup> / <sub>8</sub>	375
10-AS-L	10	30	59½	22	18¾	40	¾	¾	7¾	24	4 <sup>5</sup> / <sub>8</sub>	650
12-AS-L	12	36	70	26	22	46	¾	¾	7¾	30	12 <sup>5</sup> / <sub>8</sub>	960
14-AS-L	14	42	74	30	22	52	¾	¾	13	30	13 <sup>3</sup> / <sub>8</sub>	1950
16-AS-L	16	48	90	32	29	64	3	3	15	42	12½	3800
18-AS-L	18	54	102	36	33¼	64	3	3	16	42	12 <sup>3</sup> / <sub>8</sub>	4300
20-AS-L	20	60	102	30	36	70	3	3	19	45	6 <sup>15</sup> / <sub>16</sub>	4800
22-AS-L	22	60	119	48	35 <sup>3</sup> / <sub>8</sub>	70	3	3	18	45	7	5300
24-AS-L	24	72	132	43	44 <sup>5</sup> / <sub>8</sub>	82	3	3	22	45	8	6900

## Maximum Operating Conditions

Working temperature	350° F (167.7° C)
Working pressure	150 PSIG (10.5 bar)

Higher pressures available upon request.

## Materials of Construction

Body	Steel
Flanges	Steel - ANSI 150#

Constructed per ASME Code Section VIII, Division 1.

Job Name \_\_\_\_\_

Location \_\_\_\_\_

Engineer \_\_\_\_\_

Contractor \_\_\_\_\_

Contractor P.O. No. \_\_\_\_\_

Sales Representative \_\_\_\_\_

Model No. Ordered \_\_\_\_\_

ASME CERTIFICATION REQUIRED \_\_\_\_\_ Yes \_\_\_\_\_ No